

FLASH

The Electrical Board of Missouri and Illinois

OFFICERS

Jeff Wahl

Chairman of the Board
Cummins Sales and Service

Michael Smith

1st Vice Chairman
Heideman Associates, Inc.

Phil Wentz

2nd Vice Chairman
McClure Engineering

Kurt Schulz, Treasurer

Eaton's Crouse-Hinds Division

BOARD OF DIRECTORS

Riley Adams

Ameren Illinois

Bob Benson

Benson Electric Co.

Lacey Bernard

The Okonite Co.

Joe Burbridge

Leviton Manufacturing Co.

Joe Burns

Guarantee Electrical Co.

Tom Bush

Eaton Corp.

Steve Dietiker

McClure Engineering

Aaron Eckhardt

Faith Group

Rick Heyman

City of St. Louis

Bob Kaemmerlen

Kaemmerlen Electric

Mike Kemper

Pyramid Electrical Contractors

Bill Kuempel

Butler Supply

John Luth

Ameren Missouri

Drew McMinn

Springfield Electric Supply

Dave Meglio

Meglio and Associates

Bob Mirbaha

Metro Electric Supply

Bob Peat

RJP Electric

Tim Schaeffer

Graybar Electric

Craig Schild

Kris Steiger

Schaeffer Marketing Group

Jeff Stoyanov

Vector Electrical Sales

Cathi Tennant

Frost Supply

Vol. 111 No. 8

AUGUST 21, 2020

Harsh and Hazardous Area Locations

PDH: 2 / JC & City: 2- code
(2 hour seminar only)

Date: Thursday, October 15th

Location: EBMI Office

Time: 8:00 to 10:00 a.m.

Cost: \$100 – before 10-8 / \$150 after 10-8 for EBMI Member Companies
\$160 - before 10-8 / \$210 after 10-8 for Non-Member Companies

Instructor: Kurt Schulz, Eaton's Crouse-Hinds Div.

INFORMATION: This seminar will provide a basic understanding of Harsh and Hazardous Areas; how they are defined, proper product installation and maintenance, and protection methods in accordance with NEC 500-516.

- Importance of properly installed explosion proof equipment.
- Components of combustion
- NEC classifications of hazardous areas
- Equipment for hazardous area
- Seals, code changes for articles 500-516

ENROLLMENT FORM – (Please Print)

Name _____ e-mail _____
Company _____ Phone (____) _____
Address _____ City/State/Zip _____

Check one:

☐ Will Call EBMI with Credit Card ☐ Invoice ☐ Will mail check



Message from Incoming Chairman

Jeff Wahl

It is quite an honor to be elected to lead the Electrical Board during our 2020-21 year.

As I step into this role, we are facing challenges that affect how we do business. Covid-19, lockdowns, working from home, furloughs and social distancing. Many businesses saw their revenues fall during the lockdown which causes stress for everyone involved in that business. It was a difficult time to live through for all of us, but we will get through this. We now see cars and trucks on the road again, workers at construction sites, so we are starting to see business return.

EBMI, like your business wants to be operational for a long time going forward. As we enter our 112th year, EBMI will be different than in the past. We also have to follow the various government mandates and guidelines that will affect our events and programs. We will be providing some classes and seminars virtually this year. Events are being reviewed and changed to protect our members, their customers and the staff. By now, you have made some adjustments to accommodate the safety of your staff and customers, so you know the challenges that need to be addressed.

Yes, this may be a year like no other for the EBMI organization but we will get through it. There may be some up and downs, last minute changes to events or even a need to cancel one. Please know that we are doing the very best for our members and as always, we ask that you contact the staff if you have any suggestions.

We are very happy to have you as a member and hope you will continue your membership for many years to come. Your continued financial support of this organization sends a powerful message to others that are considering membership in our organization.

IN MEMORIAM

The Electrical Board officers and staff express our sincere condolences to the family of **Jim Kuba**, retired from William Tao & Associates who passed away on August 4th

CALENDAR OF EVENTS

See calendar on www.electricalboard.org

Aug.	Clean Energy Summit (Cancelled)
Sept. 7th	Labor Day (EBMI Office Closed)
Sept 14th	Classes/Seminars start (Pending # of Registrations)
Sept. 16th	Transformers Seminar
Sept. 18th	Board of Directors Meeting
Sept 21st	GOLFFest At Crescent Farms Golf Course See info in this FLASH
Sept. 29th Oct. 1st Oct. 6th Oct. 8th	Protection of Electrical Systems (2 hours) Protection of Electrical Systems (2 hours) Protection of Electrical Systems (2 hours) Protection of Electrical Systems (2 hours)
Oct.	Electrical Safety Symposium <i>Potential Virtual Seminar</i>
Oct. 15th	Harsh and Hazardous Area Locations
Nov. 11th	Veterans Day
Nov. 26	THANKSGIVING (EBMI Office Closed and Nov. 27th)
Dec. 3rd	CHRISTMAS MIXER At St. Charles Convention Center
Dec 24th Dec 25th	Christmas EVE (EBMI Office closed) MERRY CHRISTMAS (EBMI Office closed)
Jan	Energy Efficiency Workshop <i>Potential Virtual Seminar</i>

Call EBMI at 636-305-6434 for more information or to gain more information on any of our events or visit our website at www.electricalboard.org. You can also send an email to annie@electricalboard.org or bill@electricalboard.org.

Protection of Electrical Systems

(Need 12 students to hold this seminar)

To be offered virtually only

8 pdh / 8 code hours

for Jefferson County and City of St. Louis

(Four 2-hour sessions – must attend all 8 hours)

Dates: Tuesday, September 29th

Thursday, October 1st

Tuesday, October 6th

Thursday, October 8th

Time: 7:30 to 9:30 a.m. each session

Cost: \$125 – before 9-15 / \$175 after 9-15 for
EBMI Member Companies

\$185 - before 9-15 / \$235 after 9-15 for
Non-Member Companies

Instructor: Michael Smith, Heideman Associates

Conductors: The installation of cables in wood and metal framing, shallow grooves, behind panels that allow access and surface mounted; Installation of cables or conductors in the earth; Explain the effects of chemicals, water, direct sunlight and other conditions; Explain overcurrent protection and short circuit protection; Importance of clearances for feeders and service conductors; Explain why fill ratio is important and affects ampacity of conductors.

Equipment: Sizing equipment for available fault current; how to determine fault current and why it is important; selecting the correct overcurrent devices; importance of signage NFPA 70E commercial not dwellings; the separation of arcing parts from combustible material; explain working clearances; minimizing shock hazards for personnel.

ENROLLMENT FORM – (Please Print)

Name _____

e-mail _____

Company _____

Phone (____) _____

Address _____

City/State/Zip _____

Check one:

☐ Will Call EBMI with Credit Card

☐ Invoice

☐ Will mail check

TRANSFORMERS

(4 PDH's and 4 contact hours- Code)

Space is limited - sign up early!

**\$100 for employees of EBMI member firms if
made before Sept. 9th; \$150 after this date.**

**\$160 for employees of non-member firms if made
before Sept. 9th; \$210 after this date.**

Date: Wednesday – September 16th

**Location: EBMI Office (tentative for now)
900 S. Highway Dr. – Ste 203
Fenton, MO 63026**

Time: 8:00 am to 12:00 noon

Presented by: **Greg Haub – Eaton**

INFORMATION: This seminar will provide a basic understanding of transformer operation, calculations, installation, and NEC requirements.

- 1) Transformer selection, application and basic calculations.
- 2) Unit Substation and pad mount transformers.
- 3) Energy efficient and harmonic mitigation transformers.
- 4) Installation and application considerations for Transformers

**PLEASE scan/email it to annie@electricalboard.org to the
ELECTRICAL BOARD or mail in to address below as soon as
possible but before deadline above for advanced rate.**

Please check one: ☐ Will send check

☐ Will call EBMI office with Credit card

Please mail check to EBMI, 900 S. Highway Drive - Fenton, MO 63026 or call the Electrical Board office at 636-305-6434 to pay by American Express, Visa or Mastercard. **MUST BE PAID
BEFORE CLASS BEGINS.**

1st Name _____

Email: _____

2nd Name _____

Email: _____

Company _____

Address _____

City/State/Zip _____

Phone (____) _____

Contact Person _____



**To the following NEW MEMBERS who joined the Electrical Board
Due to pandemic, we apologize for the delay in recognizing
these new members...**

NEW CORPORATE MEMBER COMPANIES

Ramona Nicula
KAI Engineering
2060 Craigshire Road - St. Louis, MO 63146
314/241-8188

Chuck Wentzel
AKSA Power Generation USA
1510 N. 89th St. – Fairview Heights, IL 62208
618-402-7024
www.aksausa.com

NEW 2ND CORPORATE REPRESENTATIVES

Brad Chism – Priority Wire & Cable
Colin Frentzel – Electric Power Systems
Steve Saathoff – AKSA Power Generation USA

NEW CORPORATE REPRESENTATIVES

Kelly Hewitt – Independent Electrical Contractors
Thomas Graham - Rexel

NEW ACTIVE MEMBER:

Phil Beeler – Springfield Electric Supply

Congrats to the following who have recently retired after many years in industry...

Sheila Sperla – IEC
Edwin Scherry – Scherry Engineering

POSITION AVAILABLE

8120 - QUOTATIONS SPECIALIST/INSIDE SALES REPRESENTATIVE

Schaeffer Marketing Group has a new opportunity available for a top-notch Inside Sales Representative. We are seeking a self-motivated, detail oriented professional to sell wire and other electrical commodities to distributors. Strategic negotiation skills and the ability to work in a fast-paced environment are keys to being successful. This is a full-time benefit-eligible position.

Responsibilities

- Act as a sales assistant for our outside sales team
- Actively engage and be proactive in sales activities, reaching out to customers automatically with product updates – initiate business
- Negotiate prices and help close deals
- Follow up on hot or key quotes
- Respond to customer requests on a timely basis, confirming all orders and verifying prices and expected ship dates
- Actively expedite hot orders and job orders. Notify customer when materials ship.
- Evaluate sales results. Try to influence results and communicate progress.

Qualifications:

- Sales experience is preferred
- Electrical industry experience is preferred
- Bachelor's degree is preferred

Please contact KimW@smgprep.com for more information.

EDUCATION CLASSES AND SEMINARS START SHORTLY

We realize that engineers need PDH's and contractors need contact hours for Jefferson County's and City of St. Louis' continuing education for license renewal. We have decided to offer several classes and seminars in the fall semester to address these needs, but some of these will depend on any guidelines set by St. Louis County that could affect the EBMI Office.

Jefferson County (JC) will complete a 3-year cycle (1-1-19 to 12-31-21) and contractors are required to show 8 CODE contact hours for license renewal. The City also requires 8 hours of code **each year**. See the classes or seminars below that have been pre-approved by Jefferson County and City of St. Louis. Call the EBMI office (636-305-6434) to enroll as soon as possible... **classes or seminars will run only if we have minimum # of students**. The advanced rate (2 weeks prior to start) saves you \$50 per person.

Practical Applications Of Electrical Equipment and Devices –

Starts Sept. 15th for 8 sessions

6:00 – 8:30 pm

At Frost Supply (Tentatively)

Instructor: Dan Asaro, Frost Supply

Grounding – Starts Sept. 17th for 5 sessions

To be held virtually

10 PDH / 8 hours – JC Code and City

Instructor – Phil Wentz, McClure Engineering

SEMINARS

Protection of Electrical Systems

To be held virtually – four 2 hour sessions

Tuesdays and Thursdays

Dates: Sept. 29, Oct. 1st, 6th and 8th

Time: 7:30 to 9:30 am each session

8 PDH / 8 hours – JC Code and City

(Must attend full 8 hours to receive above hours)

Instructor: Michael Smith, Heideman Associates

Transformers – September 16th

4 PDH / 4 hours – JC Code

8:00 am – 12 noon at EBMI Office (tentatively)

Instructor: Greg Haub, Eaton

Lighting Controls for Non-Residential Buildings – Nov. 10th

Co-sponsored with IES-St. Louis Section

4 PDH

8:00 am to 12 noon at EBMI Office

Instructor: Jeff Stoyanov, Vector Electrical Sales

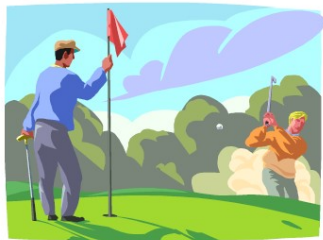
Harsh and Hazardous Area Locations – October 15th

2 PDH / 2 hours –JC code and City

8:00 am to 10 am at EBMI Office

Instructor: Kurt Schulz, Eaton's Crouse-Hinds Division

**A complete brochure is available through our website at
www.electricalboard.org, call the EBMI Office at 636-305-6434**



MAKE SURE YOU "SWING INTO ACTION" EARLY IF YOU PLAN TO PARTICIPATE AT ... The Electrical Board's

27th Annual Shotgun Start/Scramble GOLFfest!

SPONSORED BY: 21ST CENTURY COMMITTEE

******It can sell out quickly, ---Click link below to reserve your foursome:***

<https://form.jotform.com/71766087011152>

_OR if you prefer... you can scan/email in the attached reservation form to annie@electricalboard.org. Payments are due by September 1ST! It's open to members and their guests! ***LIABILITY WAIVERS NEEDED FOR THIS EVENT AS WELL (SEPARATE FROM OTHER WAIVERS AS IT HAS TO BE BASED ON EACH PARTICULAR EVENT. See page 3 below.

REMINDERS: In 2008-09, EBMI's Board of Directors adopted a new liquor policy for all of our events. Because of this policy, we issue 4 beer tickets per person for that day. Unlimited soda/water will be provided in coolers at various holes. If you wish to PURCHASE additional domestic beers, they will be sold at clubhouse and from cart personnel for \$3.00. *****However, NO DRINK TICKETS CAN BE REDEEMED INSIDE THE CLUBHOUSE DURING PLAY, only on the course!! And LOST DRINK TICKETS will NOT be reissued, so you will want to make sure you keep these secure!!*** **PLEASE NOTE: THE CLUB CANNOT ACCEPT CREDIT CARDS FOR DRINKS "ON THE COURSE" (ONLY at Pro Shop).** And there is NO ATM at the club so please come prepared. Driving range is open at 11:30 a.m. only (free) for our group. **NOTE: If you wish to come earlier to use driving range, YOU must purchase a small bucket for \$5.**

Date: **MONDAY, SEPTEMBER 21, 2020**

Time: **Shotgun Start at 12:30 P.M. ** (Scramble Format)**

Crescent Farms Golf Course, 745 Lewis Road, Crescent, MO 63025 636/938-6202
(Located just 15 minutes west of I-270 off I-44 at Lewis Road exit or 2 minutes east of Hwy. 109 at Eureka.)

Cost: **\$520 per foursome** (\$620 for foursome made by non-member)

Includes: Golf & Cart, Box Lunch, free driving range balls, unlimited water/soda (available on certain holes and from drink carts), 4 beer tickets per person for ON THE COURSE, and one free putt per person at putting contest.

(You can use your drink tickets for BEER after golf for short time or purchase additional beers/drinks in the clubhouse. Winners will be announced from clubhouse after everyone finishes play.)

INTERESTED IN HAVING A FOURSOME?

Please click on link at top OR complete the attached form and scan/email it to annie@electricalboard.org as soon as possible. **If you are planning to participate in skins, mulligans, tiger hole, putting contest, sponsor a hole or donate a prize, please also include ALL on the form. It makes it easier for you so we can include total on ONE invoice for your company, and also give your company credit for their donation.** We can have 144 participants – first come, first serve basis.

DON'T PLAY GOLF? Volunteers and sponsors are needed! Sign up on attached form also!

VOLUNTEERS – Make plans to help the staff that day by serving as a judge at one of the holes or in other roles.

Our volunteers are what make this event such a success! What better way to visit with over 120+ industry associates!!!

Choice of two shifts are available: 12:00-3:30 p.m. OR 3:15 – 6:00 p.m. -- Email annie@electricalboard.org

SPONSORSHIPS – Your company may wish to participate as a FULL HOLE SPONSOR (\$200.00) or SHARED HOLE SPONSOR (\$100) or even donate an attendance prize for that night.

SPECIAL EVENTS (Optional, but additional fees – see form to register for these in advance (so it's on ONE invoice) OR you can bring cash to participate at club:

MUST BE PAID IN ADVANCED

- 1) Mulligans available-\$25/foursome;
- 2) Tiger Hole #11 - \$20 to hit 2nd shot 150 yards out;
- 3) Skins Game (benefitting Scholarship Foundation)-\$20/foursome and
- 4) Putting Contest – Sink 10' putt to enter drawing. 12 @ \$10 or 24 @ \$20 for foursome. Each putt made enters you into drawing. Winner of the Putting Contest wins 50% of amount collected. Contest will start at 12:30 P.M. and run through to end of golf. It is located near Hole #1 (at top of the hill.)

Contests included in YOUR golf foursome fee:

Hole #8 & #15 – Closest to the Pin; Hole #9, #10 & 18 – Closest to Pin on 2nd shot; Hole #6 - Longest Drive

EBMI GOLFfest is a FUNfest!

MONDAY, SEPTEMBER 21, 2020 FOURSOME RESERVATION

*Don't delay in reserving your foursome....sold out the past two years!!

***TO CONFIRM YOUR FOURSOME, CLICK ON LINK ON FIRST PAGE TO MAKE IT SIMPLER!!!** Or ...you can scan/email this form to annie@electricalboard.org. It's important you complete ALL information regarding extra contests in box below. If emailing only to confirm a foursome, please list whether you want Skins, Mulligans, Tiger, Putting (12 or 24), sponsorship (full/shared) or attendance prize....THIS IS NEEDED WHEN SENDING OUT INVOICES as each company is different.

***All payments must be received prior to September 1st.** Sorry, but we need to allow plenty of time for those on waiting lists who have sent over their forms/checks in advance. You can always do skins, mulligans later if undecided, but we need to have this form for your foursome by the deadline. It's easier for your company if you include ALL on one invoice, but you can wait until later if necessary. Thanks for your assistance.

a) ☐ **GOLF and BOX LUNCH** _____ @ \$520 per FOURSOME \$_____

SPECIAL EVENTS LISTED (1-4) below are OPTIONAL, but they are an ADDITIONAL COST. This year due to covid, all of the following contests MUST BE DONE IN ADVANCE. Please check all that apply below!

*****For invoice purposes, do you want us to: ☐ itemize to show golf & contests, etc. ☐ show only 1 total for all.*****

1) **SKINS GAME** @ \$20 PER FOURSOME ☐ YES ☐ NO \$_____

2) **MULLIGANS** @ \$25 PER FOURSOME ☐ YES ☐ NO \$_____

3) **TIGER HOLE** @ \$20 PER FOURSOME ☐ YES ☐ NO \$_____

(Tiger Hole- pay \$20 and your foursome hits 2nd shot from 150 yards out on Hole#11.)

4) **10' PUTTING CONTEST** (One free putt will be given to each per person)

Do you want **additional putts** (in addition to the free one)? ☐ YES ☐ NO

*** ☐ 12 @ \$10 **OR** ☐ 24 @ \$20 per foursome \$_____

Put TOTAL FOR YOUR FOURSOME (adding in any of the optional special events) \$_____

*****In addition to above, let us know if you want a sponsorship OR will donate a \$25 prize.**

b) ☐ **SPONSORSHIPS** (Please fill out company name below, and check whether you want a full or shared hole sponsorship.)

☐ **FULL Hole Sponsorship** @ \$200.00 \$_____

(Exclusive sponsorship! Only your company name will appear at the tee or greens)

☐ **SHARE Hole Sponsorship** @ \$100.00 \$_____

(Your company's name, along with one or more companies, will be placed at one of the tees or greens.)

COMPANY NAME FOR HOLE SPONSORSHIP: _____

(Please type or print company name as you want it to appear on the sign)

c) ATTENDANCE PRIZE DONATION (optional) -CHANGE FOR 2020****

For this year only, we are asking for \$25 to be donated to the attendance prize fund. EBMI staff will purchase gift cards to minimize contact with the prizes. Your company name will be listed on that gift card. We try to award one prize for each foursome.

☐ Yes, we will donate \$25. ☐ Sorry, we cannot donate this year. \$_____

TOTAL DUE FOR A, B & C \$_____

PLEASE CHECK ONE: ☐ CHECK WILL BE MAILED ☐ SEND INVOICE

☐ WE WILL CALL EBMI, 636/305-6434 TO PAY BY VISA, MASTERCARD OR AMERICAN EXPRESS

Want to volunteer as a judge? Email annie@electricalboard.org and let her know the shift that works best for you. ☐ GOLFfest VOLUNTEER (Judge)

CHOOSE SHIFT: ☐ 12:00 noon. - 3:30 p.m. **or** ☐ 3:15 - 6:00 p.m.

NAME (PLEASE PRINT OR TYPE)

COMPANY

EMAIL ADDRESS

PHONE#

FLASH SPONSORS

ero

Electrical Representative Organization

Who reps that line? No more guessing!

Search for reps by manufacturer at
www.erostl.com.

CK POWER
SYSTEMS

KOHLER
IN POWER. SINCE 1920.

Authorized Distributor

90
YEARS

YOUR COMPLETE SOURCE FOR
ENGINE AND GENERATOR POWER

314-868-8620

www.ckpower.com

LA

LIGHTING

ASSOCIATES

314-531-3500 | hello@laiweb.net | laiweb.net
Follow us on Instagram: @lightingassociates

It's Our Business to Protect Yours

FEDERATED
INSURANCE

Kyle Bluestein

513.884.5154 | kebluestein@fedins.com

**SALES, SERVICE
AND SUPPORT.**
636-660-7696



SIEMENS

Siemens Industry, Inc.

11612 Lilburn Park Road
St. Louis, MO 63146

GIP GATEWAY
INDUSTRIAL POWER, INC.

GENERATORS & TRANSFER SWITCHES

~ Sales ~ Service ~ Rental ~
Planned Maintenance

aksa POWER
GENERATION
POWER YOUR FUTURE



www.gipower.com

888-865-8675



ELECTRO SAVINGS
CREDIT UNION

For You, Your Company & Employees

Call Pat Petty: (314) 434-6470 x1406

ElectroSavings.com

Federally insured
by NCUA



ESS Electronic
Support
Systems



LIEBERT® A/C & POWER PARTS

314-739-6400 or www.elecsupport.com

EDF- RG Computer Power

314-569-2526

www.edf-rg.com



HOLT
ELECTRICAL
SUPPLIES

HOLTELECTRICALSUPPLIES.COM

**Branch
Directory**

St. Louis City Headquarters

1943 S. Vandeventer Ave.

St. Louis, MO 63110

D: 314-533-5555 | F: 314-533-2205

Cape Girardeau, MO

2002 N. Kingshighway St.

Cape Girardeau, MO 63701

D: 573-475-7575 | F: 866-859-6445

O'Fallon, MO

1718 West Terra Lane

O'Fallon, MO 63366

D: 636-321-2300 | F: 636-321-2301

ELCO

Chip Alexander
Commercial Fleet Manager

15110 Manchester Rd
Baltwin, MO 63011



Chevrolet

Cadillac

636-227-5333
Direct: 636-207-2164
Cell: 314-392-3558
Fax: 636-227-9454

www.elcochevroletcadillac.com
calexander@elcochevroletcadillac.com

BUTLER
SUPPLY

WBE CERTIFIED

STATE OF MISSOURI
ST. LOUIS CITY & LAMBERT AIRPORT

LARGE STOCKING INVENTORY
LIGHTING & GEAR SPECIALISTS ON STAFF

ELECTRICAL PLUMBING VOICE & DATA



ButlerSupply.com

100 YEARS
OF SERVICE | EST
19 17

Your Local Partner of Choice for
**POWER SYSTEMS SALES,
RENTAL AND SERVICE**

FABICK CAT

800.845.9180

www.fabickcat.com

HOLT
LIGHTING
DEPOT

HOLT
energy

Arnold, MO

540 Jeffco Blvd.

Arnold, MO 63010

D: 314-714-1714 | F: 314-714-1715

Fenton, MO

1702 Chase Drive

Fenton, MO 63026

D: 636-680-0000 | F: 866-403-3445

Washington, MO

1852 Highway A

Washington, MO 63090

D: 636-231-6969 | F: 636-231-6601

Connect-4-Success (C4S)

Dave Meglio, President of C4S has announced that the organization has received 501c3 status from the IRS. This means that donations to C4S are tax deductible. Send donations to Connect-4-Success, 1595 Hoff Ct., O'Fallon, MO 63366. EBMI has been involved with C4S for the last five years and several EBMI members serve on the C4S Board.

The school/work program will be challenging with Ritenour High School going virtual to start the year. We are seeking companies in the Ritenour School District to be part of the program so when program starts we can reach out to you.

The C4S Board would like to implement a Mentoring program for the current school year. We are asking EBMI members to volunteer to mentor one of the Ritenour seniors. Please email bill@electricalboard.org to sign up for this program or to learn more about the program.

EBMI endorses

Federated Insurance
For your insurance needs

Kyle Bluestein
513-884-5154

and
Heartland Payment
Systems

**For your credit card
processing
CONTACT:
Chris Danner**
314-599-2026